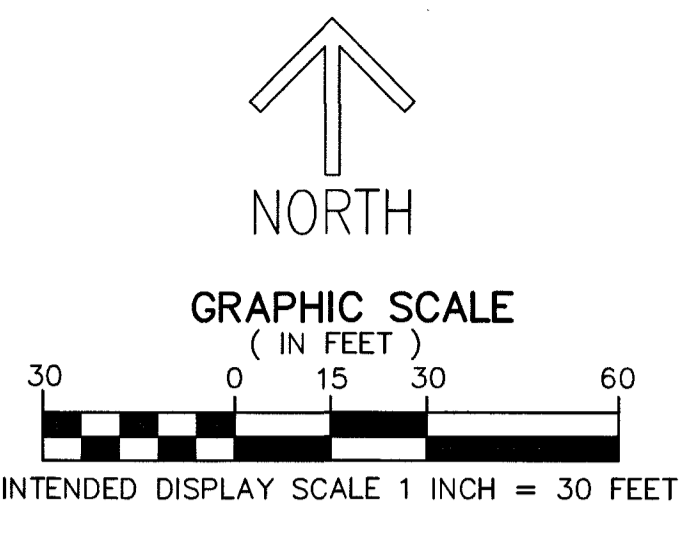
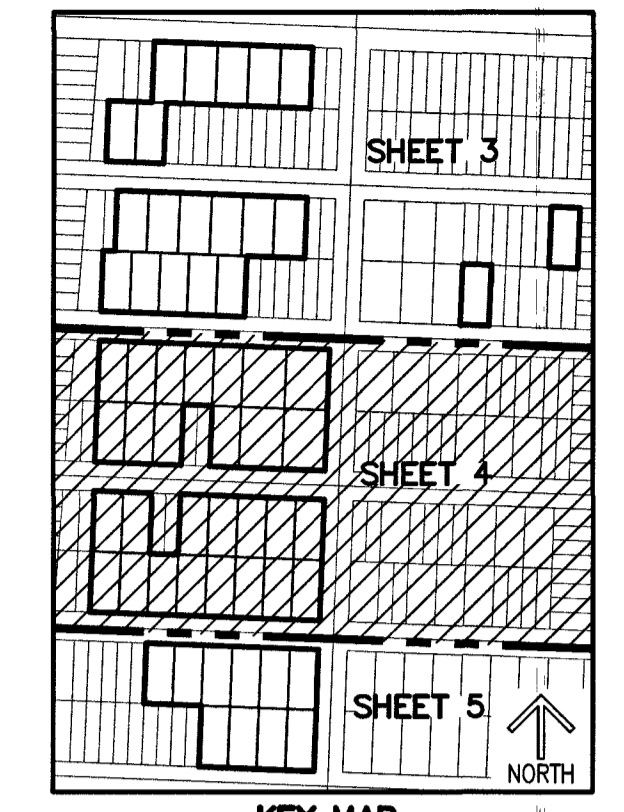


THIS INSTRUMENT PREPARED BY
DAVID P. LINDLEY
OF
CAULFIELD & WHEELER, INC.
SURVEYORS - ENGINEERS - PLANNERS
7900 GLADES ROAD, SUITE 100
BOCA RATON, FLORIDA 33434 - (561)392-1991
CERTIFICATE OF AUTHORIZATION NO. LB3591



NORTH PALM BEACH PLAT NO. 1, BLOCK 9 & BLOCKS 13 - 17 REPLAT

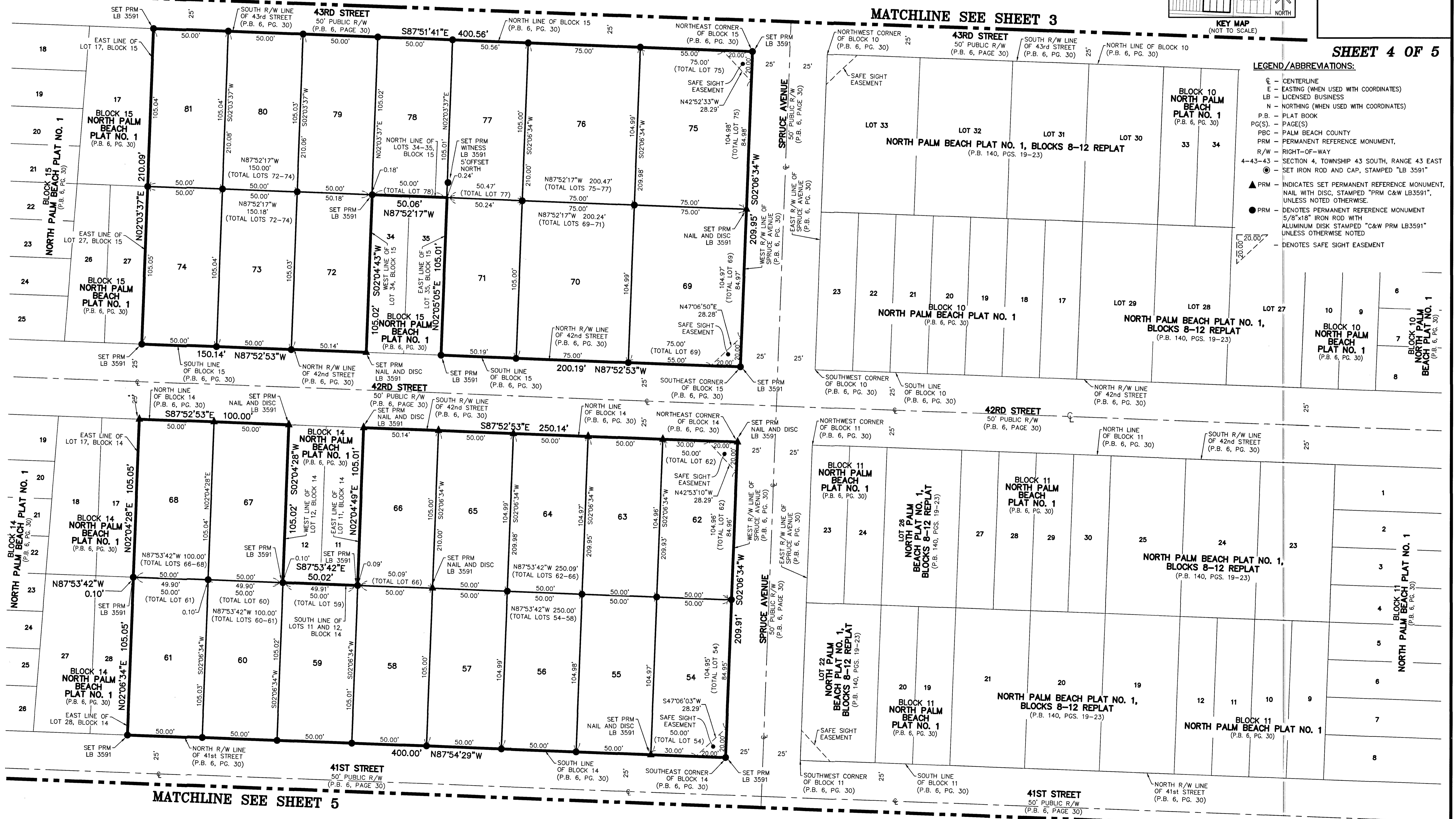
BEING A REPLAT OF LOTS 15, 16, 37 AND 38, BLOCK 9, AND LOTS 3 THROUGH 13, AND LOTS 26 THROUGH 29, BLOCK 17,
AND LOTS 3 THROUGH 15, AND LOTS 27 THROUGH 36, BLOCK 16, AND THE EAST 5 FEET OF LOT 16, BLOCK 16,
AND LOTS 1 THROUGH 16, AND LOTS 28 THROUGH 33, AND LOTS 36 THROUGH 43, BLOCK 15,
AND LOTS 1 THROUGH 10, AND LOTS 13 THROUGH 16, AND LOTS 29 THROUGH 44, BLOCK 14,
AND LOTS 1 THROUGH 12, AND LOTS 37 THROUGH 44, BLOCK 13,
NORTH PALM BEACH PLAT NO. 1, AS RECORDED IN PLAT BOOK 6, PAGE 30 OF THE PUBLIC RECORDS OF PALM BEACH COUNTY, FLORIDA,
LYING IN SECTION 4, TOWNSHIP 43 SOUTH, RANGE 43 EAST, CITY OF WEST PALM BEACH, PALM BEACH COUNTY, FLORIDA.



70

MATCHLINE SEE SHEET 3

MATCHLINE SEE SHEET 3



- LEGEND/ABBREVIATIONS:**
- CL - CENTERLINE
 - E - EASTING (WHEN USED WITH COORDINATES)
 - LB - LICENSED BUSINESS
 - N - NORTHING (WHEN USED WITH COORDINATES)
 - P.B. - PLAT BOOK
 - PG(S) - PAGE(S)
 - PBC - PALM BEACH COUNTY
 - PRM - PERMANENT REFERENCE MONUMENT
 - R/W - RIGHT-OF-WAY
 - 4-43-43 - SECTION 4, TOWNSHIP 43 SOUTH, RANGE 43 EAST
 - - SET IRON ROD AND CAP, STAMPED "LB 3591"
 - ▲ PRM - INDICATES SET PERMANENT REFERENCE MONUMENT, NAIL WITH DISC, STAMPED "PRM C&W LB3591", UNLESS NOTED OTHERWISE.
 - PRM - DENOTES PERMANENT REFERENCE MONUMENT 5/8"x18" IRON ROD WITH ALUMINUM DISK STAMPED "C&W PRM LB3591" UNLESS OTHERWISE NOTED
 - - - DENOTES SAFE SIGHT EASEMENT

SHEET 4 OF 5

MATCHLINE SEE SHEET 5

MATCHLINE SEE SHEET 5